

Construction-Practice Zoning

Historical records of construction and repair may not exist or be hard to locate. RoadMap GPR Services enables the highway engineer to assess subsurface conditions over vast lengths of road. The wealth of detailed information can be overwhelming. RoadMap Analysis tools enable systematic data reduction into summary reports.

Our specialists use RoadMap_Analysis to generate automated zoning and feature classification schemes. The reduced data are placed in the RoadMap Sectional Evaluation (ROSE) Database and used to create summary reports such as statistical summary tables or electronic files for import in PMS and GIS systems.

Zoned data in Figure 2 are from the road section shown in Figure 1. The discontinuity indicator, shown in Figure 2, identifies zones that may need further study. RoadMap_View is used to zoom in on critical areas as illustrated in Figure 3 and 4.



Figure 1: Google Earth map showing the position of GPR data displayed in Figure 2.

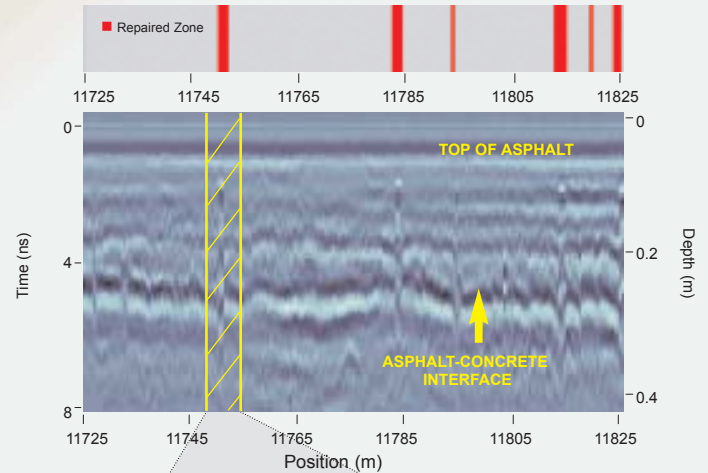


Figure 2: Automated zoning display at top shows where unusual features have occurred. Interactive software enables viewing at a variety of scales.

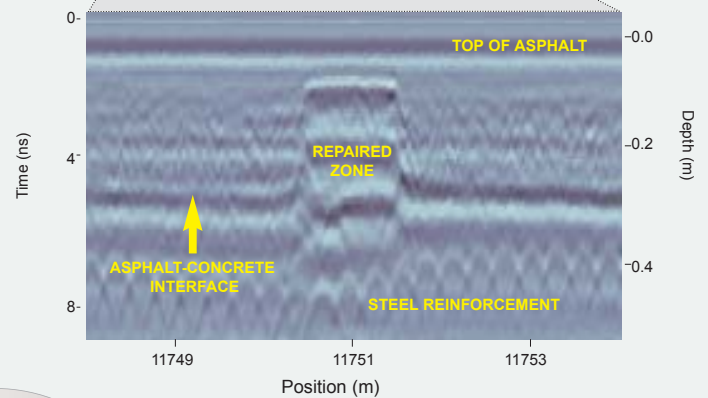


Figure 3: A zoom-in on the feature at 11750 m in Figure 2 shows a former repair zone that has been overlain by newer asphalt.

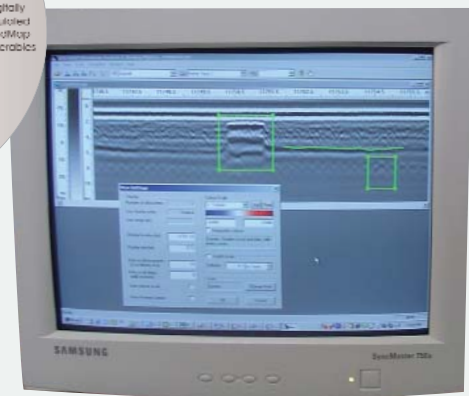
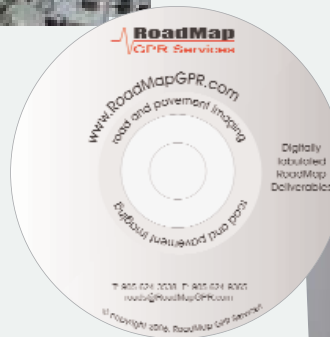


Figure 4: RoadMap_View and RoadMap_Analysis provide our specialist, with quick and easy access to all data collected enabling generation of optimal derived products for customers.